

## PRODUCT SPECIFICATIONS



IMAC 2000 S / 2000 EC / 2000 EC 2T / 2200 EC 2T

## TECHNICAL SPECIFICATIONS | DIMENSIONS AND WEIGHTS

1 kW = 860 kcal/hr 1 kW = 3,413 Btu/hr 1 kW = 3.6 MJ/hr 1 kg = 1.2 l/hr

MODEL IMAC	1200 EC	1500 EC	2000 EC	2000 S	2000 EC 2T	2200 EC 2T	4000 E
Fuel	Diesel	Diesel	Diesel	Diesel	Diesel	Diesel	Diesel
Heat output (Btu/hr)	409,000	495,000	683,000	683,000	477,700 / 683,000	477,700 / 683,000	891,000 / 1,307,000
Heat output (kW)	120	145	200	200	140 / 200	140 / 220	261 / 383
Fuel consumption max. (l/hr)	11.4	13.6	20	20	13.9 / 20	13.9 / 20.5	26 / 38
Efficiency (%)	92	92	92	92	92	92	92
2-step burner and fan					*	*	*
Heated air flow (m³/hr)	8,500	10,000	12,000	12,000	9,000 / 12,000	9,000 / 12,000	18,000 / 24,000
Max. ventilator back pressure (Pa)	500	600	600	600	350 / 600	350 / 550	400 / 1,000 / 700
Power supply (V)	3 x 400	3 x 400	3 x 400	3 x 400	3 x 400	3 x 400	3 x 400
Power consumption (AMPS)	3.5	6	6	7.5	4 / 6	4 / 6	9 - 20 - 20.3
EC fanmotor	*	*	*		*	*	
Outlet cone Ø (mm)	1 x 500	1 x 500	1 x 600	1 x 600	1 x 600	1 x 600	3 x 500
Flue connection Ø (mm)	200	200	200	200	200	200	300
Thermostat connection	1	1	1	1	2	2	1
Dim. heater only L x W x H (mm)	2200 x 800 x 1350	2200 x 800 x 1351	2400 x 800 x 1350	2400 x 800 x 1350	2400 x 800 x 1350	2400 x 800 x 1350	3850 x 1200 x 2010
Dim. incl. packing L x W x H (mm)	2110 x 800 x 1350	2110 x 800 x 1351	2310 x 800 x 1350	2310 x 800 x 1350	2310 x 800 x 1350	2310 x 800 x 1350	3850 x 1200 x 2010
Weight (kg)	467	467	545	545	550	550	1,300
Weight incl. packing (kg)	467	467	545	545	550	550	1,300

## FEATURES

MODEL IMAC	1200 EC	1500 EC	2000 EC	2000 S	2000 EC 2T	2200 EC 2T	4000 E
<b>FLUE STACKS</b>							
Galvanized pipe 1 m, Ø 200 mm	*	*	*	*	*	*	
Galvanized pipe 1 m, Ø 300 mm							*
Galvanized rain cap, Ø 200 mm	*	*	*	*	*	*	
Galvanized rain cap, Ø 300 mm							*
Galvanized bend 45°, Ø 200 mm	*	*	*	*	*	*	
Galvanized bend 45°, Ø 300 mm							*
<b>THERMOSTATS</b>							
RT1, room thermostat -10/+40 °C with 5 m cable and plug, IP 54, switching differential ± 2 degrees	*	*	*	*	*	*	*
RT2, as RT1, with 10 m cable IP 54	*	*	*	*	*	*	*
RT3, as RT1, with 20 m cable IP 54	*	*	*	*	*	*	*
IT1, duct thermostat 0/100 °C with 6 m cable and plug, switching differential ± 1.5%. For control of temperature in ducting system	*	*	*	*	*	*	*
DA1, dual connection for thermostat. For control of 2 heaters on 1 thermostat	*	*	*	*	*	*	*
Extension cable 10 m for thermostat, with plug	*	*	*	*	*	*	*
GSM Fault indicator for IMAC heaters	*	*	*	*	*	*	*
GSM Temperature monitoring set, no connections needed. Regardless of the type of heater	*	*	*	*	*	*	*
<b>SWITCHING / ELECTRONICS</b>							
Transformer set for electrical connections without 0	*	*	*	*	*	*	*

## PRODUCT SPECIFICATIONS

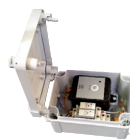
MODEL IMAC		1200 EC	1500 EC	2000 EC	2000 S	2000 EC 2T	2200 EC 2T	4000 E
<b>DISTRIBUTION HEADS</b>								
	Ø (mm)							
To be fixed instead of standard outlet panel (ex works, if necessary), excluding clamps	500	s	s	*	*	*	*	
	600	*	*	s	s	s	s	
	2 x 500	*	*	*	*	*	*	
	4 x 300	*	*	*	*	*	*	
	6 x 300	*	*	*	*	*	*	
	800							*
	2 x 600							*
<i>s = standard</i>	3 x 500							s
<b>WARM AIR TRANSPORT HOSES</b>								
Temperature resistant -30/+100 °C green, L = 6 m	300	v	v	v	v	v	v	
	500	s / v	s / v	v	v	v	v	s
	600	v	v	s	s	s	s	v
<i>v = distribution head instead of standard outlet cone</i>	800							v
On request warm air transport hoses temperature resistant -40/+80 °C and warm air transport hoses in other colours are available.								
<b>RUBBER QUICK RELEASE CLAMPS FOR HOSES WITH END RING</b>								
To connect hoses and if desired to fix to the heater flange	300			--- for 300 mm hoses ---				
	500			--- for 500 mm hoses ---				
	600			--- for 600 mm hoses ---				
	800			--- for 800 mm hoses ---				
<b>GALVANIZED HOSE CLIPS</b>								
To fasten hoses to the heater flange or to a connection piece	60 - 600			--- for 60 till 600 mm hoses ---				
<b>RECIRCULATION FLANGES AND HOSES</b>								
Recirculation flange	600	*	*	*	*	*	*	
	L (m)							
Recirculation hoses Ø 600 mm	5	*	*	*	*	*	*	*
	10	*	*	*	*	*	*	*
<b>HOSE CONNECTION BEND 45 DEGREES</b>								
	Ø (mm)							
To connect hoses to marquees	300	v	v	v	v	v	v	
<i>v = distribution head instead of standard outlet cone</i>	500	s / v	s / v	v	v	v	v	s
<b>FRESH AIR SUCTION FLANGES</b>								
Suction flange for oil burner SL 44 / 55		*	*	*	*	*	*	
<b>FUEL ACCESSORIES</b>								
Oil supply unit DE 600, 60 litre to transport oil under pressure from bulk tank to one or more heaters, to maximum height of 30 m		*	*	*	*	*	*	*
Needed per heater: connection / reduction set with magnetic valve		*	*	*	*	*	*	*
Oil preheating with cable (for SL 44 / SL 55)		*	*	*	*	*	*	*
Oil filter with water separation and bracket for return pipe		*	*	*	*	*	*	*
Oil filter set with preheating		*	*	*	*	*	*	*
Oil suction set universal		*	*	*	*	*	*	*



Flue stack with raincap



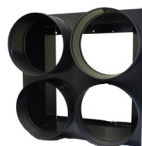
RT1, RT2, RT3



GSM Fault indicator for IMAC heaters



GSM Temperature monitoring set



Distribution head



Green hose + end ring



Rubber quick release clamp



Hose clamp