

PRODUCT SPECIFICATIONS IMA



IMA 200 RADIAL IMA 150 RADIAL IMA 111 RDD IMA 61 RADIAL



IMA 150 AXIAL IMA 111 AXIAL IMA 61 AXIAL

TECHNICAL SPECIFICATIONS | DIMENSIONS AND WEIGHTS

1 kW = 860 kcal/h 1 kW = 3,413 Btu/h 1 kW = 3.6 MJ/h 1 kg = 1.2 l/h

MODEL IMA	61 AX	61 RAD	65 EC	111 AX	111 RDD	111 RHP	150 AX	150 RAD	150 RHP	200 RAD	200 RHP
Item number	41.722.800	41.722.300	41.722.850	41.724.800	41.724.710	41.724.210	41.726.800	41.726.650	41.726.000	41.728.650	41.728.010
Fuel	Diesel	Diesel	Diesel	Diesel	Diesel	Diesel	Diesel	Diesel	Diesel	Diesel	Diesel
Heat output (Btu/hr)	222,000	222,000	222,000	375,000	375,000	375,000	512,000	512,000	512,000	682,000	682,000
Heat output (kW)	65	65	65	110	110	110	150	150	150	200	200
Fuel consumption max. (l/hr)	6.5	6.5	6.5	10.9	10.9	10.9	14.8	14.8	14.8	19.4	19.4
Efficiency (%)	92	92	92	92	92	92	92	92	92	92	92
Heated air flow (m³/hr)	4.000	4.000	4.400	5.800	8.000	10.000	7.400	9.000	11.000	10.000	13.000
Max. ventilator back pressure (Pa)	130	250	500	130	300	500	100	300	500	300	500
Power supply (V)	230	230	230	230	230	3x400	230	230	3x400	230	3x400
Power consumption (AMPS)	3.3	6.5	5.5	4.4	15	7.5	5.7	15	9	15	10
Outlet cone Ø (mm)	400	400	500	500	500	500	500	500	500	600	600
Flue connection Ø (mm)	180	180	180	200	200	200	200	200	200	200	200
Thermostat connection	*	*	*	*	*	*	*	*	*	*	*
Dim. heater only LxWxH (cm)	162x71x128	199x71x128	179x71x128	179x78x134	223x78x134	223x78x134	200x84x151	246x84x151	246x84x151	271x91x152	271x91x152
Dim. incl. packing LxWxH (cm)	203x75x145	203x75x145	203x75x145	180x80x145	241x98x172	241x98x172	210x95x172	265x95x172	265x95x172	300x104x172	300x104x172
Weight (kg)	210	245	235	295	350	340	324	385	385	450	450
Weight incl. packing (kg)	250	275	260	325	450	440	435	525	525	588	588

ACCESSOIRES

MODEL IMA	61 AX	61 RAD	65 EC	111 AX	111RDD	111 RHP	150 AX	150 RAD	150 RHP	200 RAD	200 RHP	Item number
FLUE STACKS												
Galvanized pipe 1 m, Ø 180 mm	*	*	*									41.522.172
Galvanized pipe 1 m, Ø 200 mm				*	*	*	*	*	*	*	*	41.528.192
Galvanized rain cap, Ø 180 mm	*	*	*									41.522.175
Galvanized rain cap, Ø 200 mm				*	*	*	*	*	*	*	*	41.528.187
Galvanized bend 45°, Ø 180 mm	*	*	*									41.522.171
Galvanized bend 45°, Ø 200 mm				*	*	*	*	*	*	*	*	41.528.230
Bushing set for flue in polytunnels, Ø 180 mm	*	*	*									41.750.250
Bushing set for flue in polytunnels, Ø 200 mm				*	*	*	*	*	*	*	*	41.528.181
THERMOSTATS												
RT1, room thermostat -10/+40 °C with 5 m cable and plug, IP 54, switching differential ± 2 degrees.	*	*	*	*	*	*	*	*	*	*	*	40.228.405
RT2, as RT1, with 10 m cable IP 54.	*	*	*	*	*	*	*	*	*	*	*	40.228.410
RT3, as RT1, with 20 m cable IP 54.	*	*	*	*	*	*	*	*	*	*	*	40.228.420
IT1, duct thermostat 0/100 °C with 6 m cable and plug, switching differential ± 1.5%. For control of temperature in ducting system.	*	*	*	*	*	*	*	*	*	*	*	40.000.107
DA1, dual connection for thermostat. For control of 2 heaters on 1 thermostat.	*	*	*	*	*	*	*	*	*	*	*	41.729.220
Extension cable 10 m for thermostat, with plug.	*	*	*	*	*	*	*	*	*	*	*	40.202.140
Fault detector IMA GSM.	*	*	*	*	*	*	*	*	*	*	*	41.722.720
Fault detector GSM room temperature monitoring, no connections needed. Regardless of the type of heater.	*	*	*	*	*	*	*	*	*	*	*	40.223.400
SWITCHING / ELECTRONICS												
Transformer set for electrical connections without 0						*			*		*	41.728.190
Soft-starter set for gradual run-in of fan												41.728.203
Hour counter	*	*	*	*	*	*	*	*	*	*	*	41.728.235
Digital timer, burning and ventilating	*	*	*	*	*	*	*	*	*	*	*	41.728.302
VFD fan speed controller (only factory option)						*			*		*	41.724.930

ACCESSOIRES IMA

MODEL IMA		61 AX	61 RAD	65 EC	111 AX	111 RDD	111 RHP	150 AX	150 RAD	150 RHP	200 RAD	200 RHP	ITEM NUMBER
DISTRIBUTION HEADS FOR IMA													
To be fixed instead of standard outlet panel	Ø (mm)												
	2x300	*	*										41.722.068
(ex works, if necessary), excluding clamps	4x300				*	*	*	*	*	*			41.724.177
	2x360				*	*	*	*	*	*			41.724.192
	4x300										*	*	41.728.177
	2x400										*	*	41.728.443
	2x500										*	*	41.728.068
Air distributor	400	*	*	*	*	*	*	*	*	*			50.500.450
Connection piece 300 to 400 mm for air distributor		To connect hoses 300 mm to the air distributor (400 mm)											
Connection piece 150 to 400 mm for air distributor		To connect hoses 150 mm to the air distributor (400 mm)											
WARM AIR TRANSPORT HOSES													
Temperature resistant -30/+100 °C yellow, L = 6 m	300	v	v		v	v	v	v	v	v	v	v	40.107.276
	365				v	v	v	v	v	v			40.107.278
	400	*	*		*	*	*	*	*	*	v	v	40.107.280
<i>v = distribution head instead of standard outlet cone</i>	500			*	*	*	*	*	*	*	v	v	40.107.282
On request warm air transport hoses temperature resistant -40/+80 °C and warm air transport hoses in other colours are available.													
CONNECTION PIECE FOR HOSES WITH SLEEVE													
To connect hoses, including 2 hose clips.	300												41.218.071
	400												41.404.154
RUBBER QUICK RELEASE CLAMPS FOR HOSES													
WITH END RING													
To connect hoses and if desired to fix to the heater flange.	300												40.502.067
	365												40.502.068
	400												40.502.069
	500												40.502.071
GALVANIZED HOSE CLIPS													
To fasten hoses to the heater flange or to a connection piece	60-600												41.522.196
RECIRCULATION FLANGES AND HOSES													
Recirculation flange with bayonet connection for models from production year 2008 and up	300	*	*										41.722.140
	400				*	*	*						41.724.445
	500			*									41.722.854
	500							*	*	*	*	*	41.728.445
Recirculation set for models up to production year 2008	300	*											41.722.120
	400				*	*	*						41.724.008
	500							*	*	*	*	*	41.728.008
	L (m)												
Recirculation hoses Ø 400 mm	5				*	*	*						41.729.223
	10				*	*	*						41.729.224
Recirculation hoses Ø 500 mm	5	*	*	*				*	*	*	*	*	41.729.228
	10	*	*	*				*	*	*	*	*	41.729.246
HOSE CONNECTION BEND 45 DEGREES													
To connect hoses to marquees.	Ø (mm)												
	300	v	v		v	v	v	v	v	v	v	v	41.000.300
	400	*	*								*	*	41.000.400
<i>v = distribution head instead of standard outlet cone</i>	500			*	*	*	*	*	*	*	v	v	41.000.500
FUEL ACCESSORIES													
Oil supply unit DE 600, 60 litre to transport oil under pressure from bulk tank to one or more heaters, to maximum height of 30 m.		*	*	*	*	*	*	*	*	*	*	*	41.530.005
Needed per heater: connection/reduction set with magnetic valve		*	*	*	*	*	*	*	*	*	*	*	41.522.213
Oil preheating with cable (for SL 22)		*	*	*									41.527.212
Oil preheating with cable (for SL 44/SL 55)					*	*	*	*	*	*	*	*	41.527.211
Oil filter with water separation and bracket for return pipe		*	*	*	*	*	*	*	*	*	*	*	41.722.230
Oil filter set with preheating		*	*	*	*	*	*	*	*	*	*	*	41.722.370
Oil suction set universal		*	*	*	*	*	*	*	*	*	*	*	41.520.104
TRANSPORT AND STORAGE													
Set of air wheels with axle parts		*	*	*	*	*	*	*	*	*	*	*	41.722.237
Various transport frames		*	*	*	*	*	*	*	*	*	*	*	On request



RT1, RT2, RT3



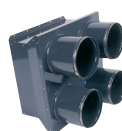
Flue stack with rain cap



Fault detector GSM



Fault detector GSM



Distribution head



Yellow hose + end ring



Connection piece



Rubber quick release clamp